

# Контроллеры кулачков EPR16S

## Технические характеристики

По вопросам продаж и поддержки обращайтесь:

Алматы (727)345-47-04  
Ангарск (3955)60-70-56  
Архангельск (8182)63-90-72  
Астрахань (8512)99-46-04  
Барнаул (3852)73-04-60  
Белгород (4722)40-23-64  
Благовещенск (4162)22-76-07  
Брянск (4832)59-03-52  
Владивосток (423)249-28-31  
Владикавказ (8672)28-90-48  
Владимир (4922)49-43-18  
Волгоград (844)278-03-48  
Вологда (8172)26-41-59  
Воронеж (473)204-51-73  
Екатеринбург (343)384-55-89

Иваново (4932)77-34-06  
Ижевск (3412)26-03-58  
Иркутск (395)279-98-46  
Казань (843)206-01-48  
Калининград (4012)72-03-81  
Калуга (4842)92-23-67  
Кемерово (3842)65-04-62  
Киров (8332)68-02-04  
Коломна (4966)23-41-49  
Кострома (4942)77-07-48  
Краснодар (861)203-40-90  
Красноярск (391)204-63-61  
Курск (4712)77-13-04  
Курган (3522)50-90-47  
Липецк (4742)52-20-81

Магнитогорск (3519)55-03-13  
Москва (495)268-04-70  
Мурманск (8152)59-64-93  
Набережные Челны (8552)20-53-41  
Нижний Новгород (831)429-08-12  
Новокузнецк (3843)20-46-81  
Ноябрьск (3496)41-32-12  
Новосибирск (383)227-86-73  
Омск (3812)21-46-40  
Орел (4862)44-53-42  
Оренбург (3532)37-68-04  
Пенза (8412)22-31-16  
Петрозаводск (8142)55-98-37  
Псков (8112)59-10-37  
Пермь (342)205-81-47

Ростов-на-Дону (863)308-18-15  
Рязань (4912)46-61-64  
Самара (846)206-03-16  
Санкт-Петербург (812)309-46-40  
Саратов (845)249-38-78  
Севастополь (8692)22-31-93  
Саранск (8342)22-96-24  
Симферополь (3652)67-13-56  
Смоленск (4812)29-41-54  
Сочи (862)225-72-31  
Ставрополь (8652)20-65-13  
Сургут (3462)77-98-35  
Сыктывкар (8212)25-95-17  
Тамбов (4752)50-40-97  
Тверь (4822)63-31-35

Тольятти (8482)63-91-07  
Томск (3822)98-41-53  
Тула (4872)33-79-87  
Тюмень (3452)66-21-18  
Ульяновск (8422)24-23-59  
Улан-Удэ (3012)59-97-51  
Уфа (347)229-48-12  
Хабаровск (4212)92-98-04  
Чебоксары (8352)28-53-07  
Челябинск (351)202-03-61  
Череповец (8202)49-02-64  
Чита (3022)38-34-83  
Якутск (4112)23-90-97  
Ярославль (4852)69-52-93

Россия +7(495)268-04-70

Казахстан +(727)345-47-04

Беларусь +(375)257-127-884

Узбекистан +998(71)205-18-59

Киргизия +996(312)96-26-47

эл.почта: [zrm@nt-rt.ru](mailto:zrm@nt-rt.ru) || сайт: <https://zander.nt-rt.ru>

# Program. Sequential Logic Controller EPR16S

## User Information

English translation

### Correct Use

The EPR16S combines the technical advantages of a programmable logic controller (PLC) with a maximum of operator convenience. Program unit, operator guidance and controller are integrated in one device. Thanks to clear text-conversation programming is very simple and can be learnt in a very short time. 9 keys without complicated double-functions are sufficient, even for complex program inputs.

### Features

- Editing, deleting and documentation of the operating states of the outputs
- Editing, deleting and documentation of the input combination
- 20 complete programs
- Copying program segments or whole program
- Any program jumps
- By using the internal time base, each step time between 1 ms and 99.9 min is possible
- 16 outputs, 8 inputs, input for external clock- and reset input
- Changing clear text display during operation, e.g. for displaying steps or speed
- Serial interface for data transfer to PC/PLC
- Output of the running process data, e.g. machine position or speed via the serial interface
- Programmable with EPRPRO for WINDOWS via PC



### Scope of Applications

Thanks to clear text-conversation programming is very simple and can be learnt in a very short time. 9 keys without complicated double-functions are sufficient, even for complex program inputs.

Neither external programming devices are necessary, nor the knowledge of a program language. The operating states of the outputs and the combinations of the inputs are entered by transferring the sequence diagram into the controller.

The device is integrated in a splash and dust proofed compact panel case with dirt-insensitive foil-coated processure point keys. The modular electronics are based on European standard size PC boards. All components can be replaced at the rear side without disassembling the device.

The EPR16S solves many varying control tasks:

- complex sequential controls over time, also dependent on input signals, e.g. control of machine tool, bakery machines, galvanic devices, machines for tire production, cleaning machines, car-wash plant, forest industry machines etc.
- Angle-, way-, counter controls and externally synchronized sequential logic controls using the external clock input, e.g. coiling machines, cutting machines, manufacturing

machines, packaging machines etc.

- any combinations of these applications.

**EPR16S** - the intelligent one-device-solution for your control problem..

### Safety Precautions



- The installation and operation must be carried out by qualified personnel only,
  - who is familiar with the professional handling of machine equipment,
  - who is familiar with the valid rules of industrial safety and accident prevention,
  - who read and understood the operating instructions and the system manual.
- The safe function of the device during machine operation cannot be guaranteed in case of wrong connection or improper operation. This may lead to fatal injuries.
- Pay attention to country specific regulations.
- The electrical installation must be performed after disconnecting the device and the machine from the mains supply.

- The wiring must be carried out according to the instructions of this operating manual.
- The person who programs the device must be protected against electrostatic discharge (ESD protection).
- Opening the device, any manipulation of the device and the avoidance of the safety facilities are not permitted.
- All relevant safety regulations and standards must be attended to.
- Non-observance of the safety regulations may cause death, severe injuries or substantial damage to property.
- Before use, please, read the operating instructions and keep it in a safe place. Make sure that the operating instructions are always available for installation, initial operation and maintenance.

Non-observance of the instructions above will cause the loss of warranty.

# Program. Sequential Logic Controller EPR16S

## User Information

### Installation

Operation voltage: AC 230V/115V  
Mains frequency AC: 50-60Hz  
Power consumption: approx. 14VA  
Temperature range: 0° - 40°C  
Protection: IP54 front  
Weight: approx. 1300g  
Fitting position: as desired

### Outputs

16 transistor outputs, DC 10-60V, 100mA  
Plus-switching  
Electrically isolated by optocoupler  
Rear 37-pole Sub-D plug-in connection

### Inputs

8 inputs, enable step, logical combination  
1 reset input  
1 clock input, max. 2000Hz  
each DC 10-30V, electrically isolated

### Incremental Encoder Input

Electrically isolated by optocoupler  
clock input, 2 lines, right/left direction of rotation  
max. 2000Hz  
0-position input (reset)

### Auxiliary Power Supply Output

DC 12V, 250mA stabilized  
Electrically isolated

### Serial Interface

V24, RS232-level  
300-9600 Baud, 8 Bit, even parity

### Processor System

16-Bit-CMOS processor system  
8MHz system cycle, 16MHz clock  
32KB EPROM, 128KB RAM  
Battery-buffered, with retentive memory

### Display

12-digit LED-dot matrix red, all ASCII-characters,  
special characters  
Height of symbols 5.08mm,  
3 adjustable brightness levels

### Keys

Integrated foil-coated keys with pressure point, 9  
keys, IP65

### Programming

Integrated programming unit, clear text-dialogue entry  
via keys or personal computer,  
Optional release by external key-operated switch  
Input functions for:

- New input, alterations, documentation of output-switching areas
- New input, alterations, documentation of input combination
- Deleting output-switching areas
- Deleting whole program
- Program selection
- Number of steps
- Program jumps
- Time of step
- Time unit
- Program (segment) copying
- In-operation correction
- Installation
- Conversion factor
- Communication via serial interface

### Self-Monitoring

Watch-Dog with control-output, memory-check  
Transfer-check serial interface

### Mechanical Construction

Sturdy plastic case in accordance with DIN  
144x144mm  
Front: foil-coated keys on aluminium supported-plate  
All electrical connections on rear side with plug  
connectors  
Mains and key-operated switch on screw terminals  
connection

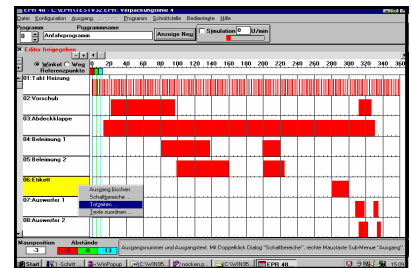
### Accessories

#### EPRPRO for WINDOWS:

PC-software for programming  
data transfer  
text editing, documentation

Cable for serial interface 2m,  
2x Sub-D-plug-in connection 25-pol.  
Order-No. 585732

Cable for serial interface 2m,  
1x Sub-D-plug-in connection 25-pol.  
1x Sub-D-plug-in connection 9-pol.  
Order-No. 585733

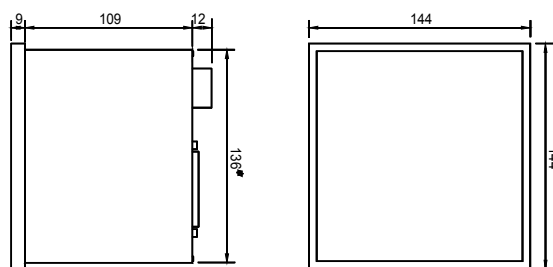


### EPRPRO for Windows - programming

couldn't be easier.

The PC-Software for all EPR/EPC-  
devices.

Dimension  
Drawing



### Variants

Order no. 585420	EPR16S, 230V AC
Order no. 585421	EPR16S, 115V AC
Order no. 585450	EPR16-RE Relais output card
Order no. 585455	EPR16-OK Optocoupler output card
Order no. 585716	EPRPRO for Windows XP, Win7 32Bit

See user manual for complete description of the device.

## По вопросам продаж и поддержки обращайтесь:

Алматы (727)345-47-04  
Ангарск (3955)60-70-56  
Архангельск (8182)63-90-72  
Астрахань (8512)99-46-04  
Барнаул (3852)73-04-60  
Белгород (4722)40-23-64  
Благовещенск (4162)22-76-07  
Брянск (4832)59-03-52  
Владивосток (423)249-28-31  
Владикавказ (8672)28-90-48  
Владимир (4922)49-43-18  
Волгоград (844)278-03-48  
Вологда (8172)26-41-59  
Воронеж (473)204-51-73  
Екатеринбург (343)384-55-89

Иваново (4932)77-34-06  
Ижевск (3412)26-03-58  
Иркутск (395)279-98-46  
Казань (843)206-01-48  
Калининград (4012)72-03-81  
Калуга (4842)92-23-67  
Кемерово (3842)65-04-62  
Киров (8332)68-02-04  
Коломна (4966)23-41-49  
Кострома (4942)77-07-48  
Краснодар (861)203-40-90  
Красноярск (391)204-63-61  
Курск (4712)77-13-04  
Курган (3522)50-90-47  
Липецк (4742)52-20-81

Магнитогорск (3519)55-03-13  
Москва (495)268-04-70  
Мурманск (8152)59-64-93  
Набережные Челны (8552)20-53-41  
Новокузнецк (3843)20-46-81  
Ноябрьск (3496)41-32-12  
Новосибирск (383)227-86-73  
Омск (3812)21-46-40  
Орел (4862)44-53-42  
Оренбург (3532)37-68-04  
Пенза (8412)22-31-16  
Петрозаводск (8142)55-98-37  
Псков (8112)59-10-37  
Пермь (342)205-81-47

Ростов-на-Дону (863)308-18-15  
Рязань (4912)46-61-64  
Самара (846)206-03-16  
Санкт-Петербург (812)309-46-40  
Саратов (845)249-38-78  
Севастополь (8692)22-31-93  
Саранск (8342)22-96-24  
Симферополь (3652)67-13-56  
Смоленск (4812)29-41-54  
Сочи (862)225-72-31  
Ставрополь (8652)20-65-13  
Сургут (3462)77-98-35  
Сыктывкар (8212)25-95-17  
Тамбов (4752)50-40-97  
Тверь (4822)63-31-35

Тольятти (8482)63-91-07  
Томск (3822)98-41-53  
Тула (4872)33-79-87  
Тюмень (3452)66-21-18  
Ульяновск (8422)24-23-59  
Улан-Удэ (3012)59-97-51  
Уфа (347)229-48-12  
Хабаровск (4212)92-98-04  
Чебоксары (8352)28-53-07  
Челябинск (351)202-03-61  
Череповец (8202)49-02-64  
Чита (3022)38-34-83  
Якутск (4112)23-90-97  
Ярославль (4852)69-52-93

**Россия** +7(495)268-04-70

**Казахстан** +(727)345-47-04

**Беларусь** +(375)257-127-884

**Узбекистан** +998(71)205-18-59

**Киргизия** +996(312)96-26-47

эл.почта: [zrm@nt-rt.ru](mailto:zrm@nt-rt.ru) || сайт: <https://zander.nt-rt.ru>